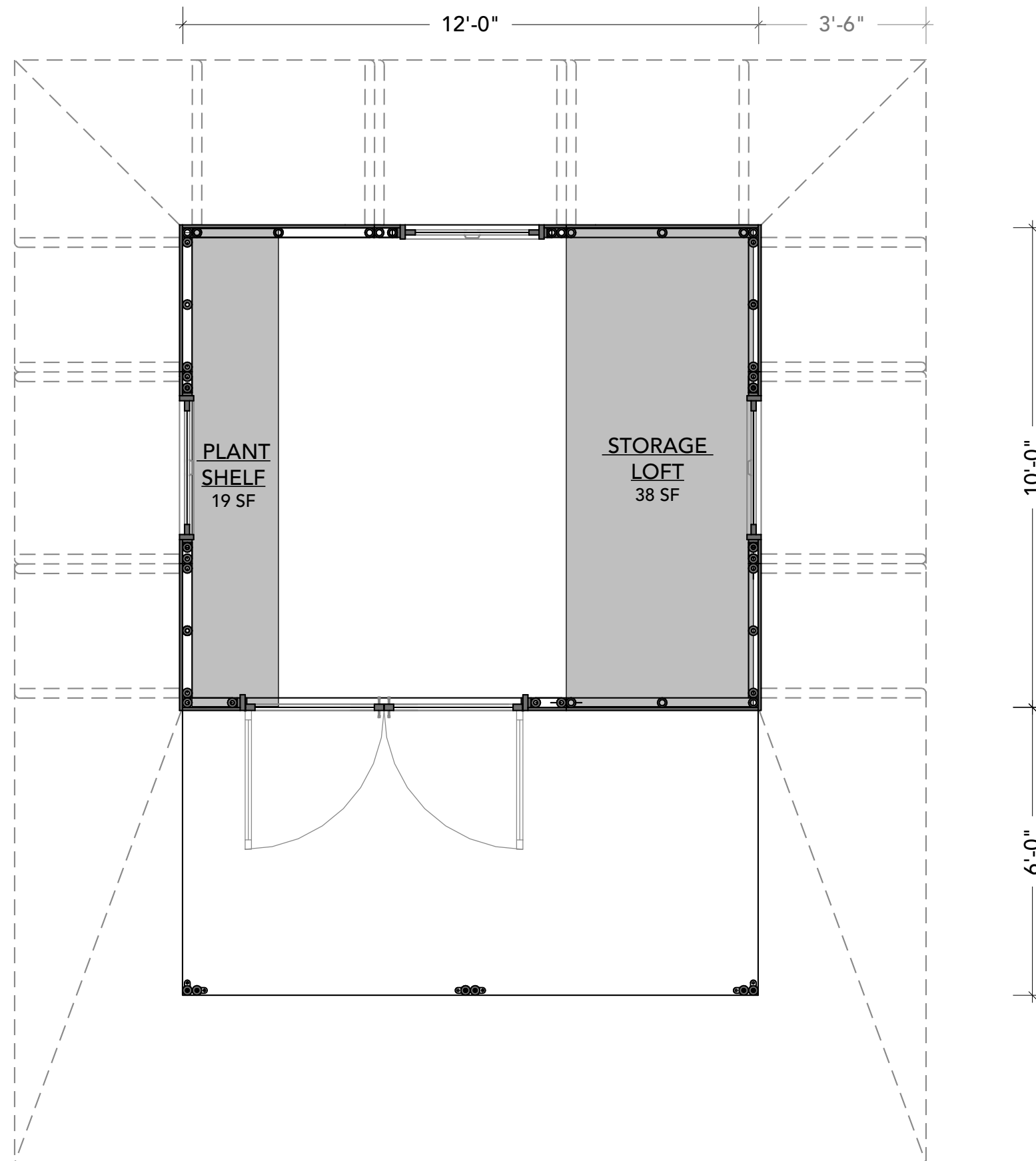


HALEIKI - with 6' lanai

FLOOR PLAN

3/8" = 1'-0"

AREA
 INTERIOR: 120 S.F.
 LOFT: 57 S.F.
 COVERED LANAI: 72 S.F.

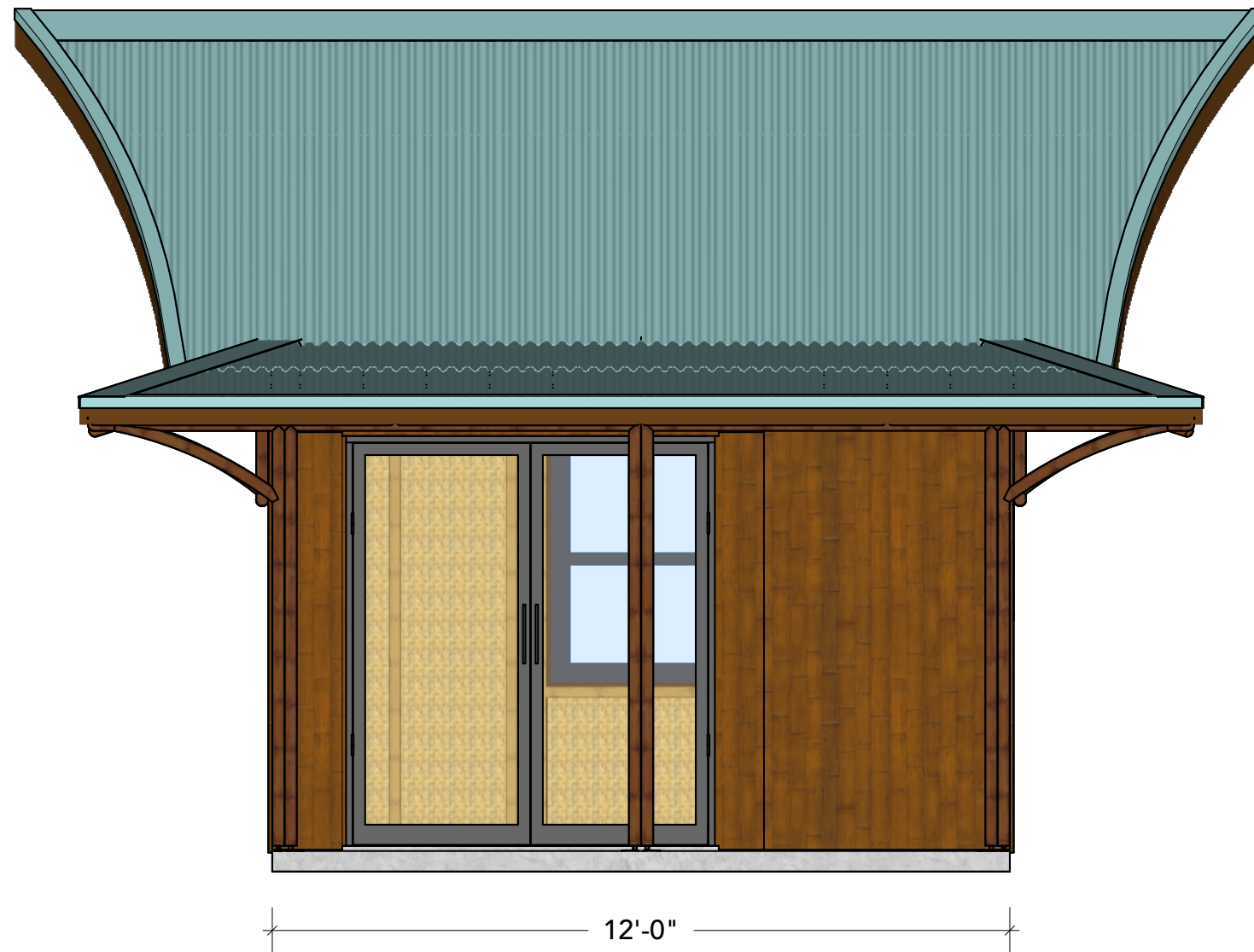


HALEIKI - with 6' lanai

LOFT PLAN
 3/8" = 1'-0"

AREA
 INTERIOR: 120 S.F.
 LOFT: 57 S.F.
 COVERED LANAI: 72 S.F.

20'-4"



7'-9"

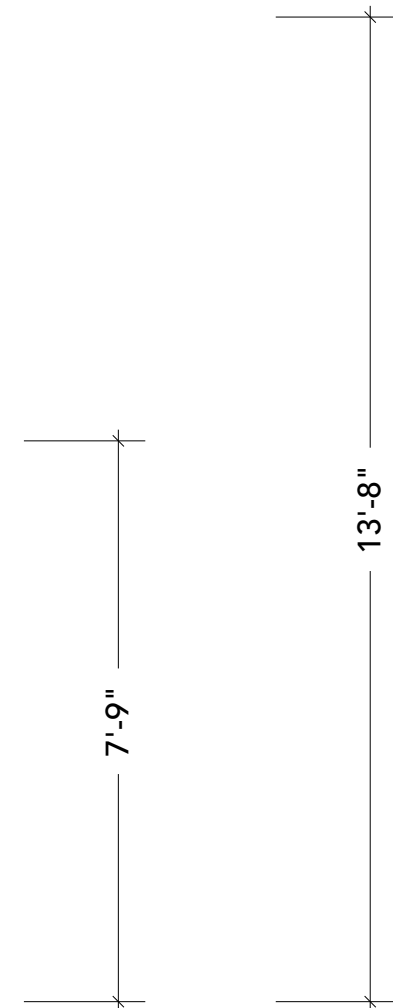
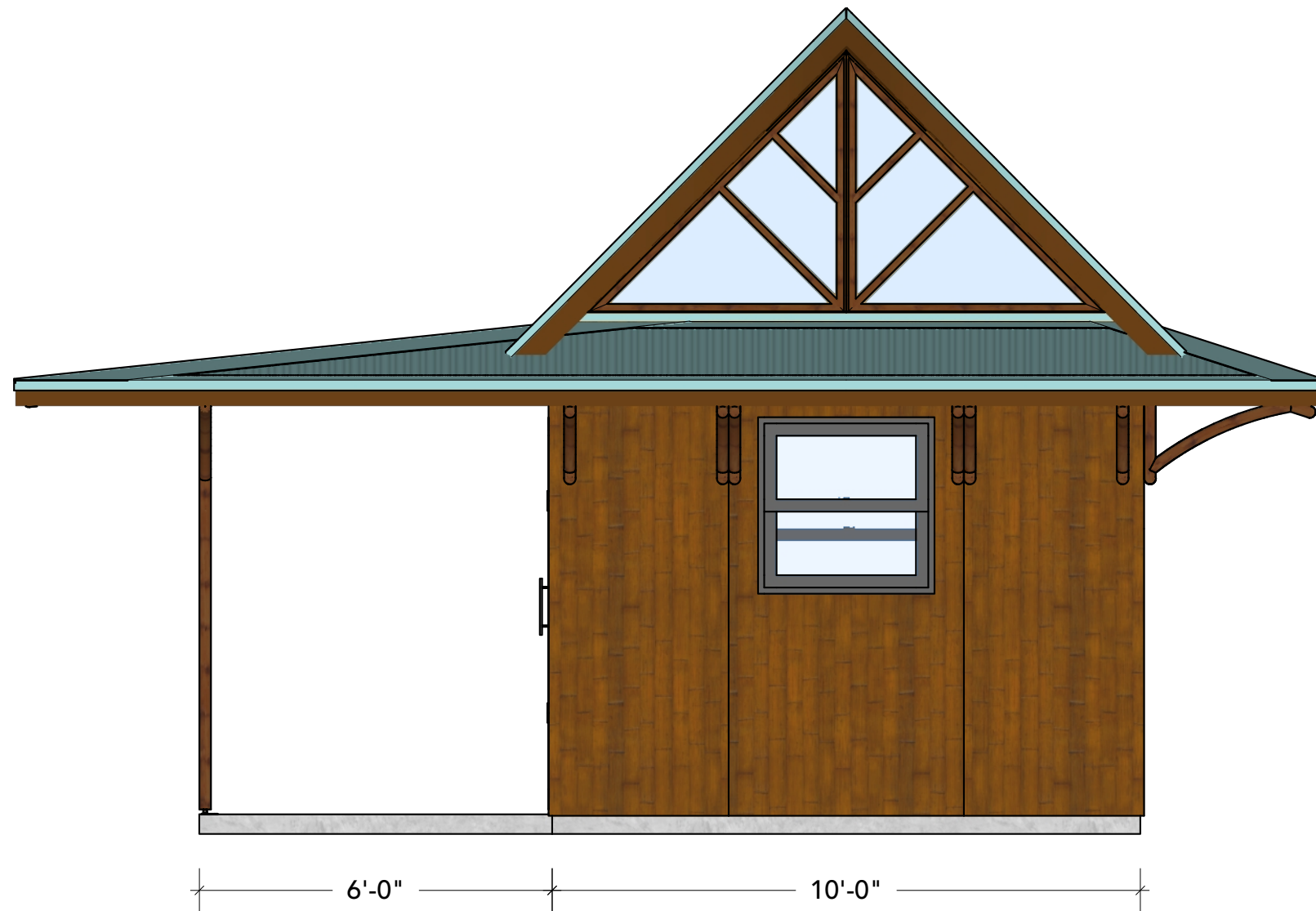
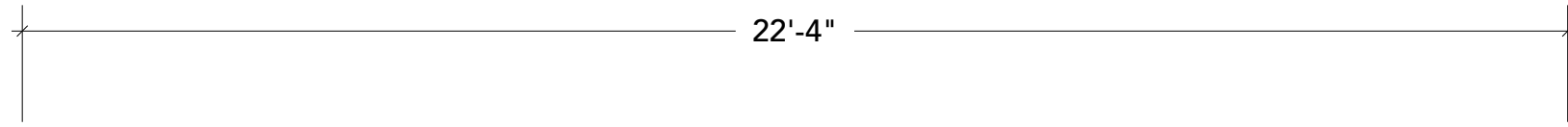
13'-8"

HALEIKI - with 6' lanai

FRONT ELEVATION

3/8" = 1'-0"

AREA
INTERIOR: 120 S.F.
LOFT: 57 S.F.
COVERED LANAI: 72 S.F.



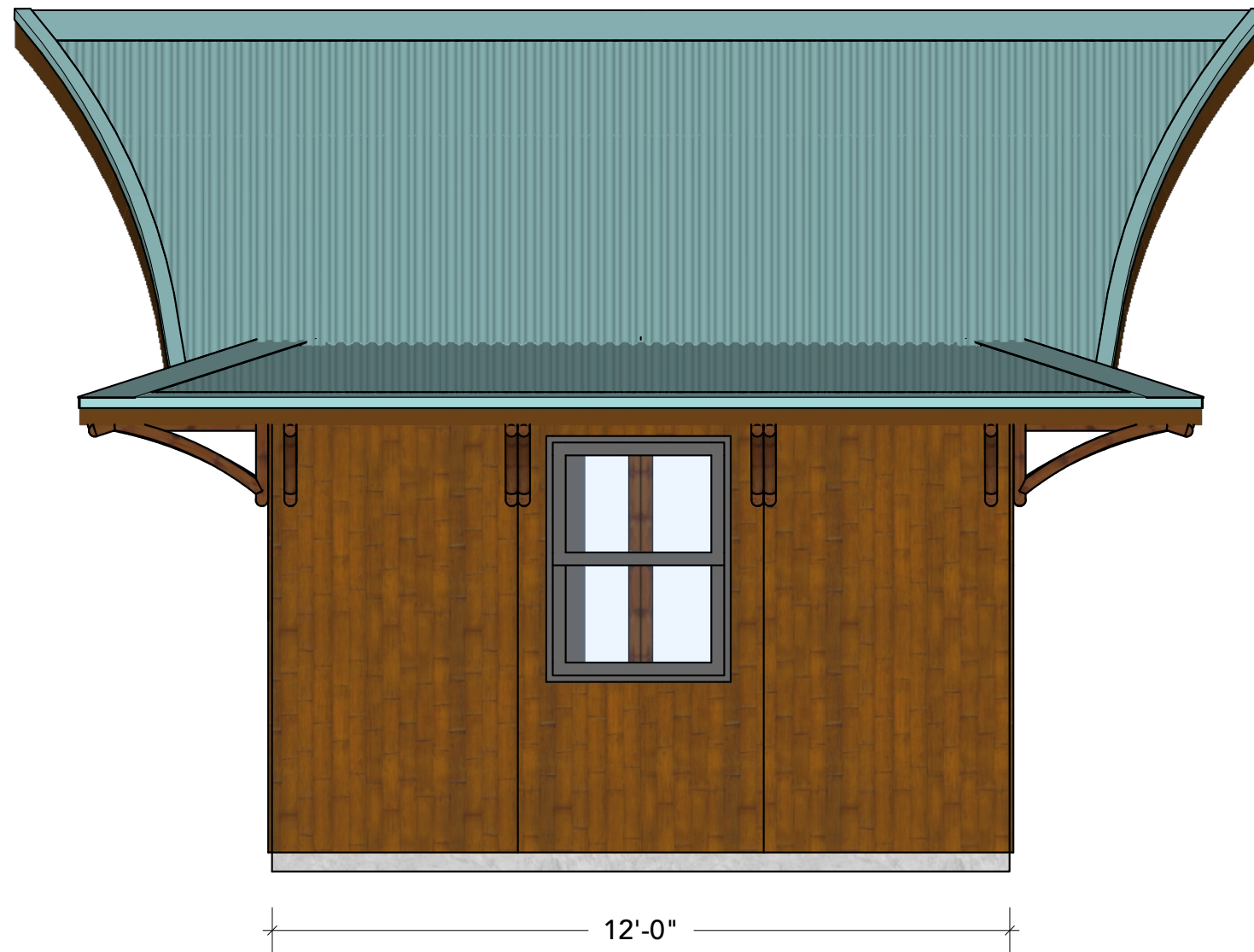
HALEIKI - with 6' lanai

LEFT ELEVATION

3/8" = 1'-0"

AREA
INTERIOR: 120 S.F.
LOFT: 57 S.F.
COVERED LANAI: 72 S.F.

20'-4"



7'-9"
13'-8"

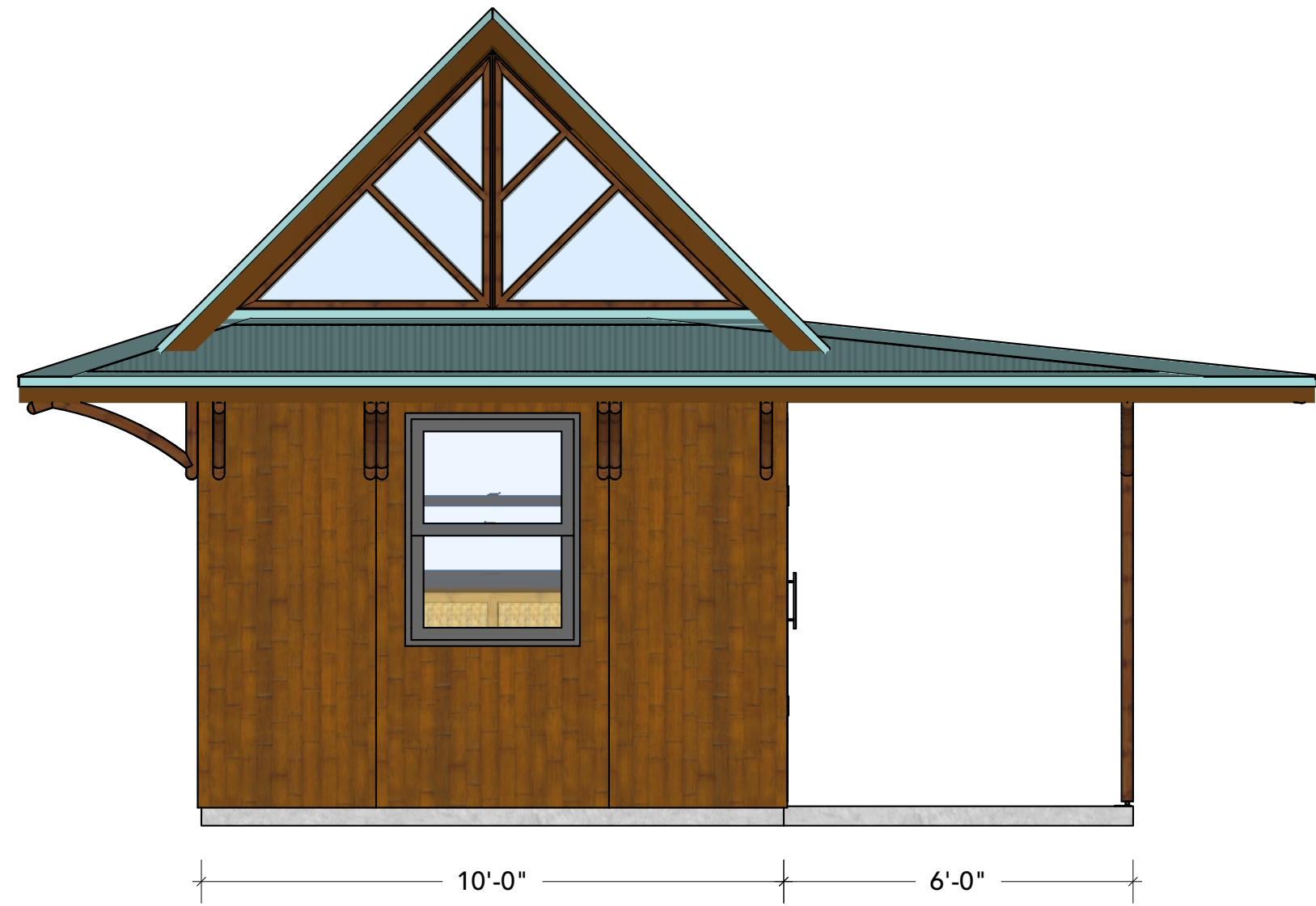
HALEIKI - with 6' lanai

BACK ELEVATION

3/8" = 1'-0"

AREA
INTERIOR: 120 S.F.
LOFT: 57 S.F.
COVERED LANAI: 72 S.F.

22'-4"



7'-9"

13'-8"

10'-0" 6'-0"

HALEIKI - with 6' lanai

RIGHT ELEVATION

3/8" = 1'-0"

AREA
INTERIOR: 120 S.F.
LOFT: 57 S.F.
COVERED LANAI: 72 S.F.