

DAVID SANDS SIGNATURE COLLECTION

EXOTIC. ORGANIC. LUXURIOUS.

Dramatic rooflines capture the spirit of the Pacific Rim. Each home in this collection is an object d'arte - crafted, carved and sculpted by artisans with exceptional attention to detail. Breathe in the organic atmosphere and intelligent use of light and space that creates your beautiful, personal sanctuary.

- Organically inspired floorplans that flow naturally
- Exotic rooflines and optional flying gables
- Expansive porches for outdoor living
- Vaulted ceilings with exposed bamboo rafters
- Solar panel ready & LEED certifiable
- Upgrade to insulation ready walls available

Polynesian 1619

3BR, 2BA

- 12:12 Pitch Roof
- 1344 sf Interior
- 455 sf Sleeping Loft
- 1240 sf Covered Porch



Designer color themes to complement natural bamboo tones.



PACKAGE INCLUDES

- Single wall exterior panels with natural split bamboo siding or stucco ready
- Interior wall panels that are ready to paint
- Expansive porches with bamboo railings
- Roof structure with sub-roof
- Interior ceiling finish and exposed bamboo rafters
- Generous 3-4 foot eaves
- Door and window jams
- Bamboo trim package
- Permit/construction plans



DAVID SANDS SIGNATURE COLLECTION

EXOTIC. ORGANIC. LUXURIOUS.

Polynesian 1619

3BR, 2BA

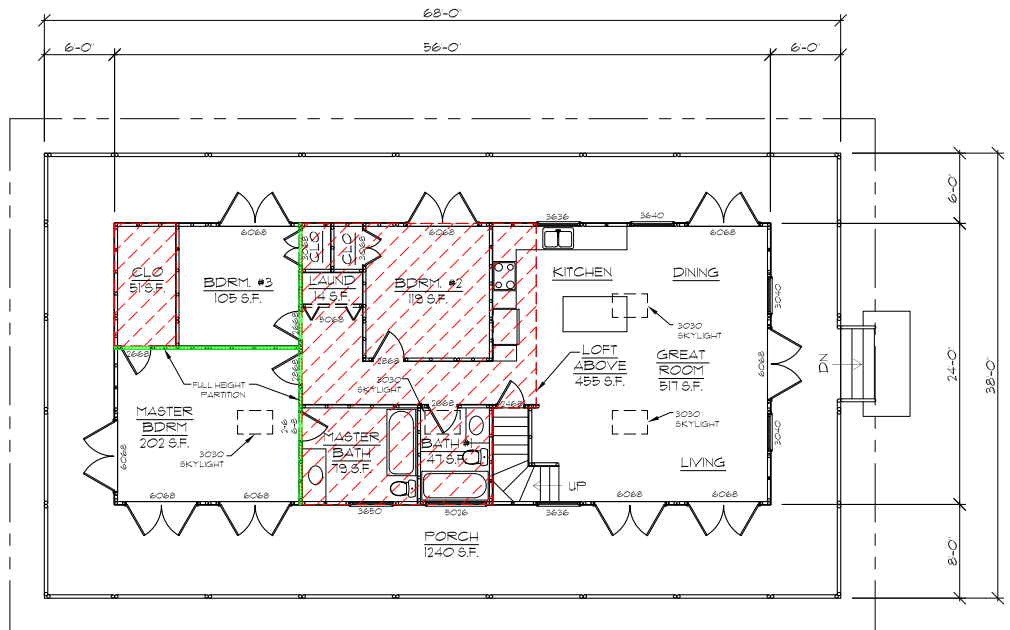
- 12:12 Pitch Roof
- 1344 sf Interior

- 455 sf Sleeping Loft
- 1240 sf Covered Porch

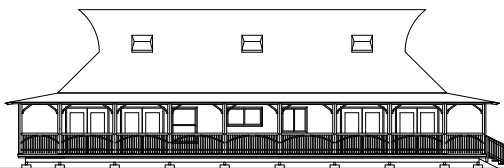
Available Upgrades & Options*

- Insulation ready cavity walls
- Woven bamboo ceiling finish
- Woven bamboo wall finish
- Exterior bamboo doors
- Bamboo screen doors
- Interior bamboo doors
- Bamboo flooring

* Fixtures and appliances shown in the plans and renderings are not included in the Bamboo Living home package. See brochure or call for more info.

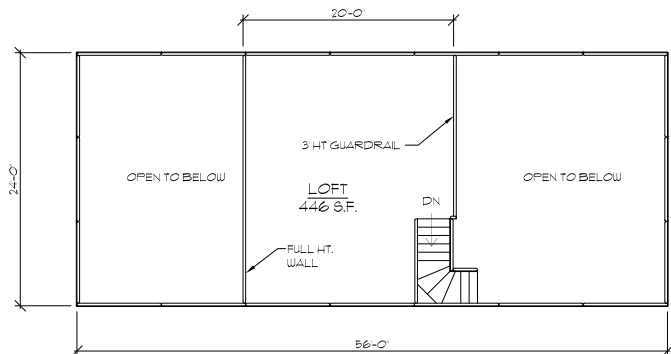


FRONT ELEVATION
Scale: 1/8" = 1'-0"



SIDE ELEVATION
Scale: 1/8" = 1'-0"

1 FLOOR PLAN -1ST FLOOR-
Scale: 1/8" = 1'-0"



2 FLOOR PLAN -LOFT-
Scale: 1/8" = 1'-0"

For more information about the home package contact a sales associate at:

Bamboo Living
P.O. Box 792168
Paia, HI 96779
(808) 572-1007 Phone
(808) 443-0606 Fax
www.bamboolive.com

