

DAVID SANDS SIGNATURE COLLECTION

EXOTIC. ORGANIC. LUXURIOUS.

Dramatic rooflines capture the spirit of the Pacific Rim. Each home in this collection is an object d'arte - crafted, carved and sculpted by artisans with exceptional attention to detail. Breathe in the organic atmosphere and intelligent use of light and space that creates your beautiful, personal sanctuary.

- Organically inspired floorplans that flow naturally
- Exotic rooflines and optional flying gables
- Expansive porches for outdoor living
- Vaulted ceilings with exposed bamboo rafters
- Solar panel ready & LEED certifiable
- Upgrade to insulation ready walls available

Bali 2080

3BR, 3BA

- 7:12 Pitch Roof
- 2080 sf Interior
- 990 sf Covered Porch



Designer color themes to complement natural bamboo tones.



PACKAGE INCLUDES

- Single wall exterior panels with natural split bamboo siding or stucco ready
- Interior wall panels that are ready to paint
- Expansive porches with bamboo railings
- Roof structure with sub-roof
- Interior ceiling finish and exposed bamboo rafters
- Generous 3-4 foot eaves
- Door and window jams
- Bamboo trim package
- Permit/construction plans



DAVID SANDS SIGNATURE COLLECTION

EXOTIC. ORGANIC. LUXURIOUS.

Bali 2080

3BR, 3BA

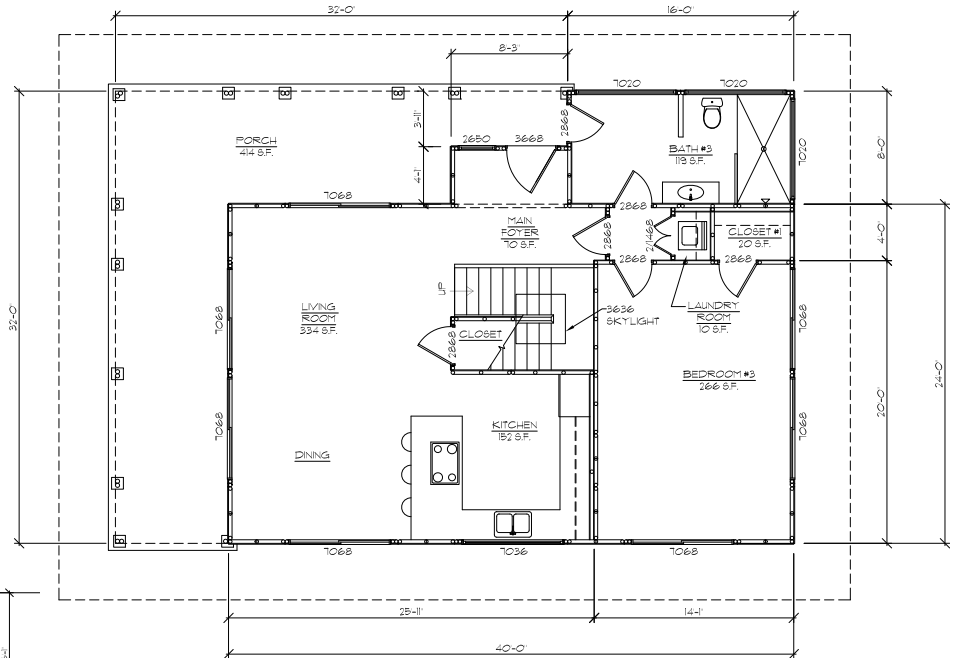
- 7:12 Pitch Roof
- 2080 sf Interior

• 990 sf Covered Porch

Available Upgrades & Options*

- Insulation ready cavity walls
- Woven bamboo ceiling finish
- Woven bamboo wall finish
- Exterior bamboo doors
- Bamboo screen doors
- Interior bamboo doors
- Bamboo flooring

* Fixtures and appliances shown in the plans and renderings are not included in the Bamboo Living home package. See brochure or call for more info.



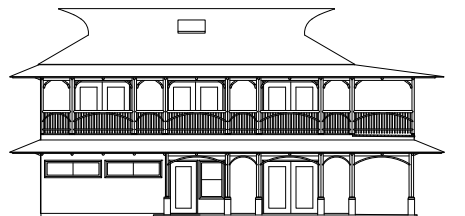
FLOOR PLAN -1ST FLOOR-

Scale: 3/16" = 1'-0"



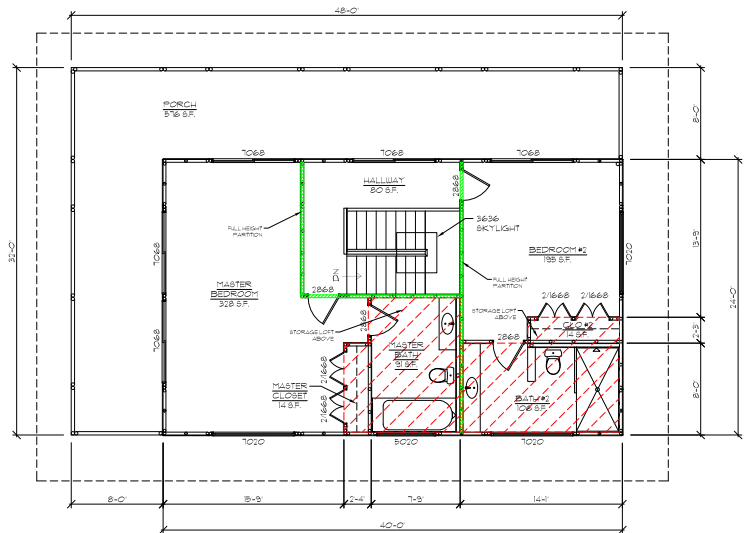
FRONT ELEVATION

Scale: 1/8" = 1'-0"



SIDE ELEVATION

Scale: 1/8" = 1'-0"



FLOOR PLAN -2ND FLOOR-

Scale: 3/16" = 1'-0"

For more information about the home package contact a sales associate at:

Bamboo Living
 P.O. Box 792168
 Paia, HI 96779
 (808) 572-1007 Phone
 (808) 443-0606 Fax
www.bamboolive.com

